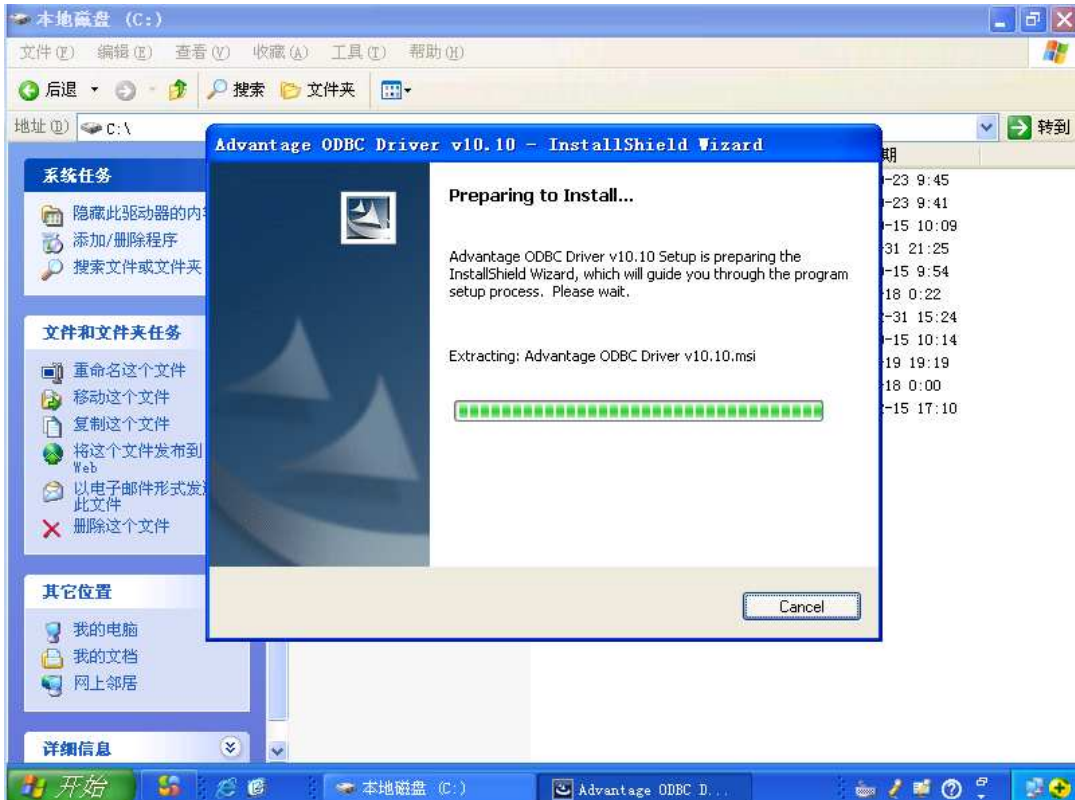
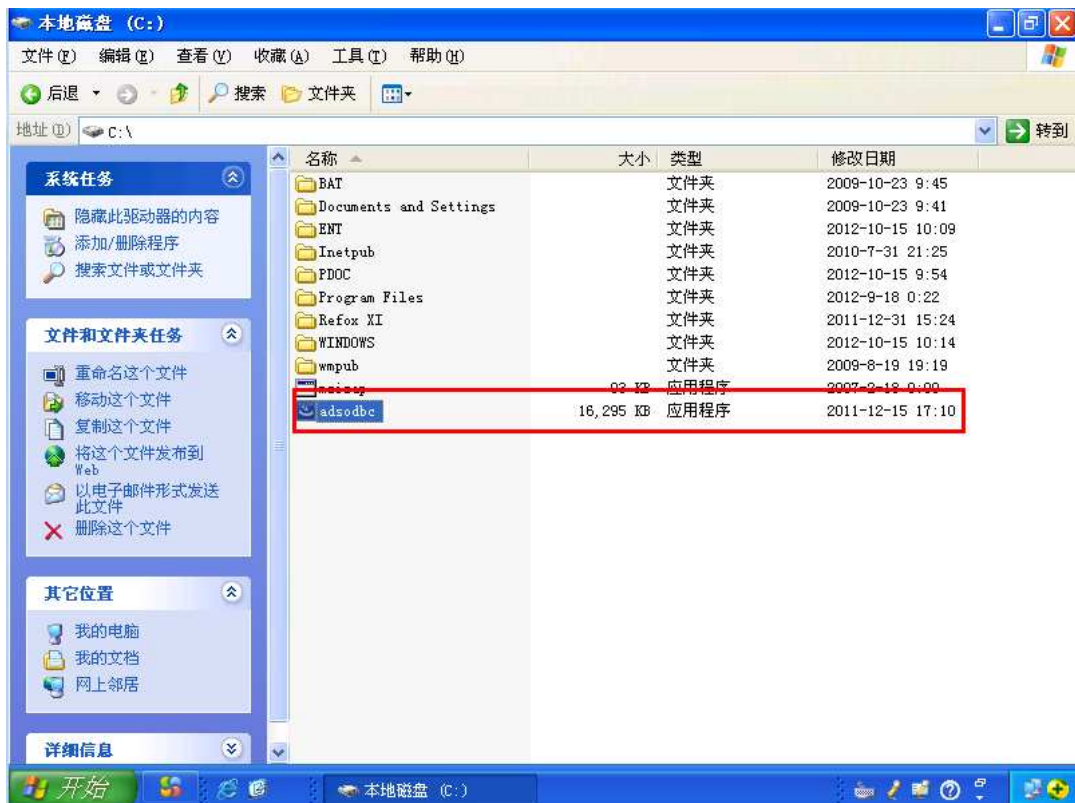
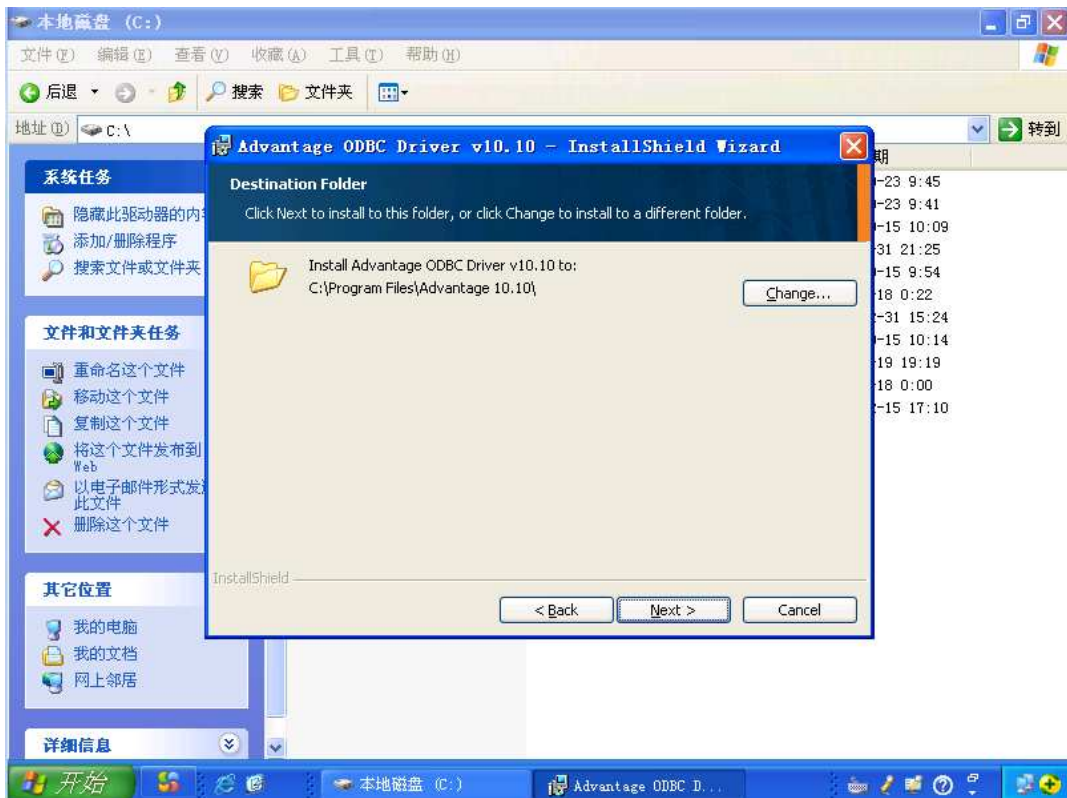
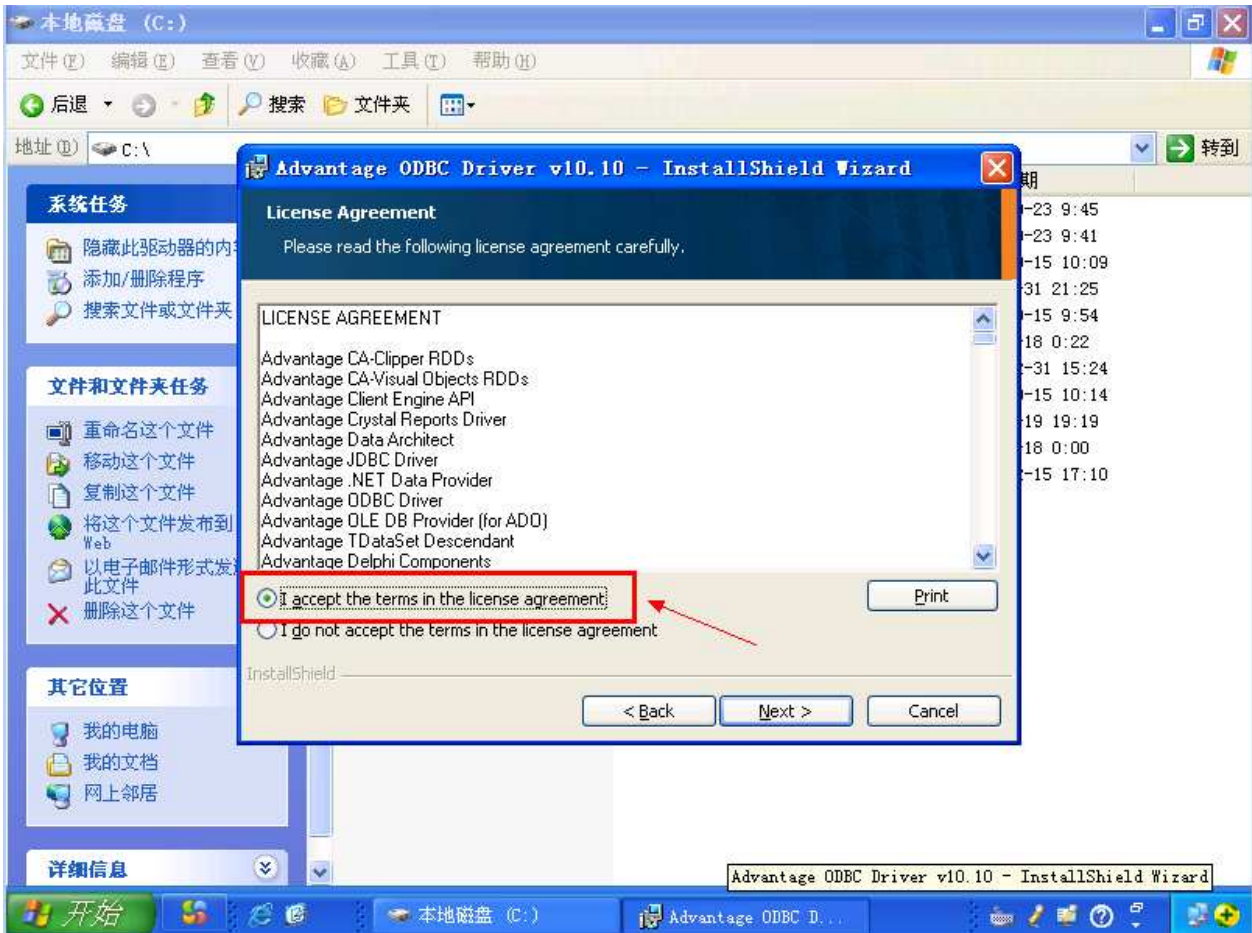
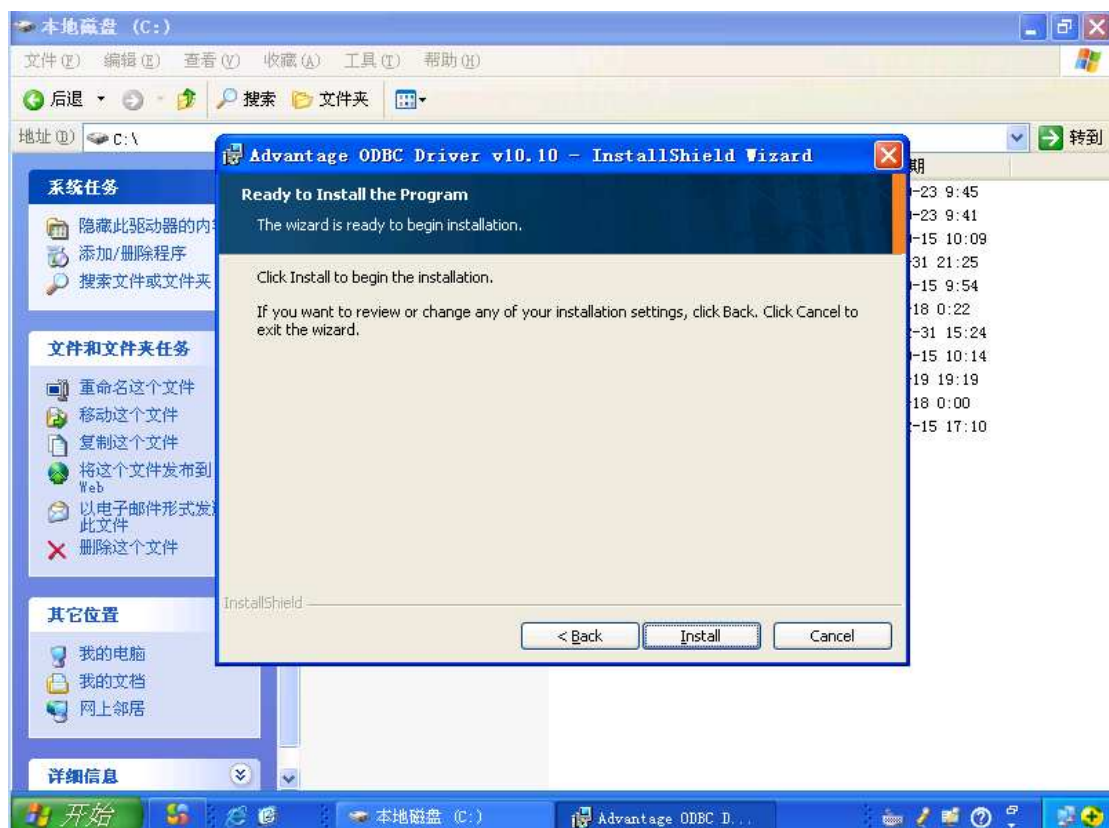
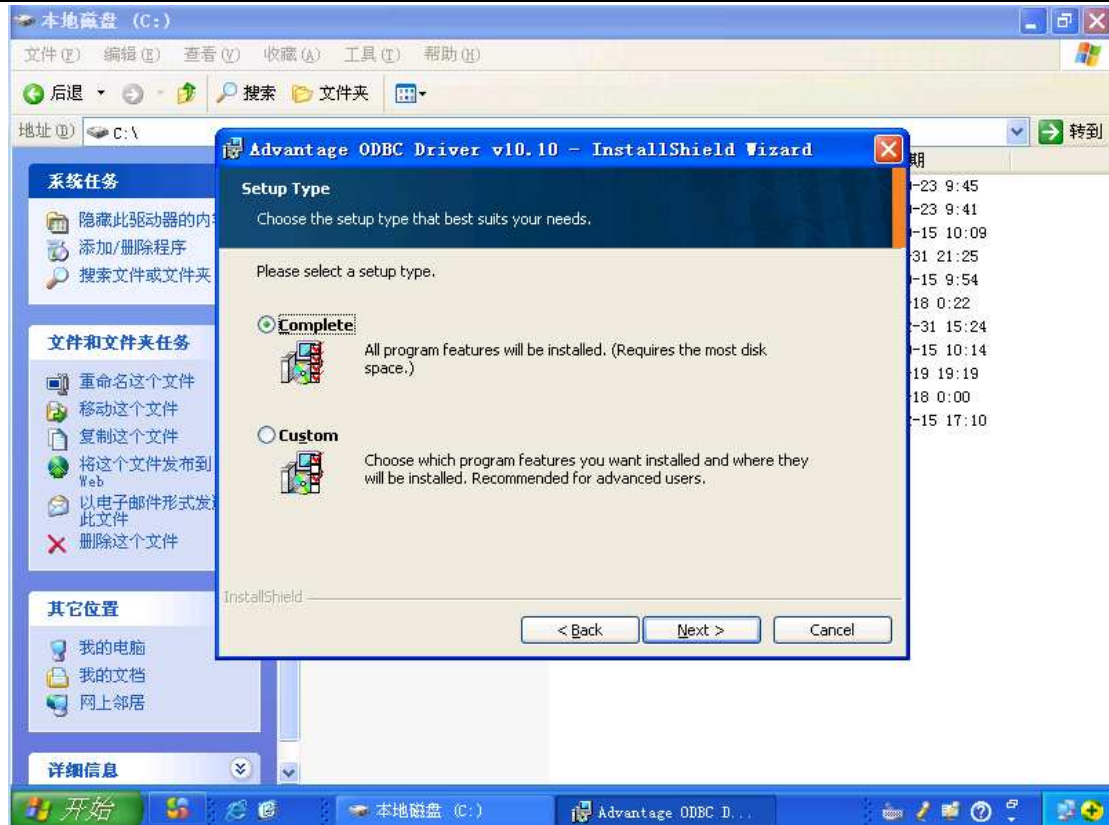
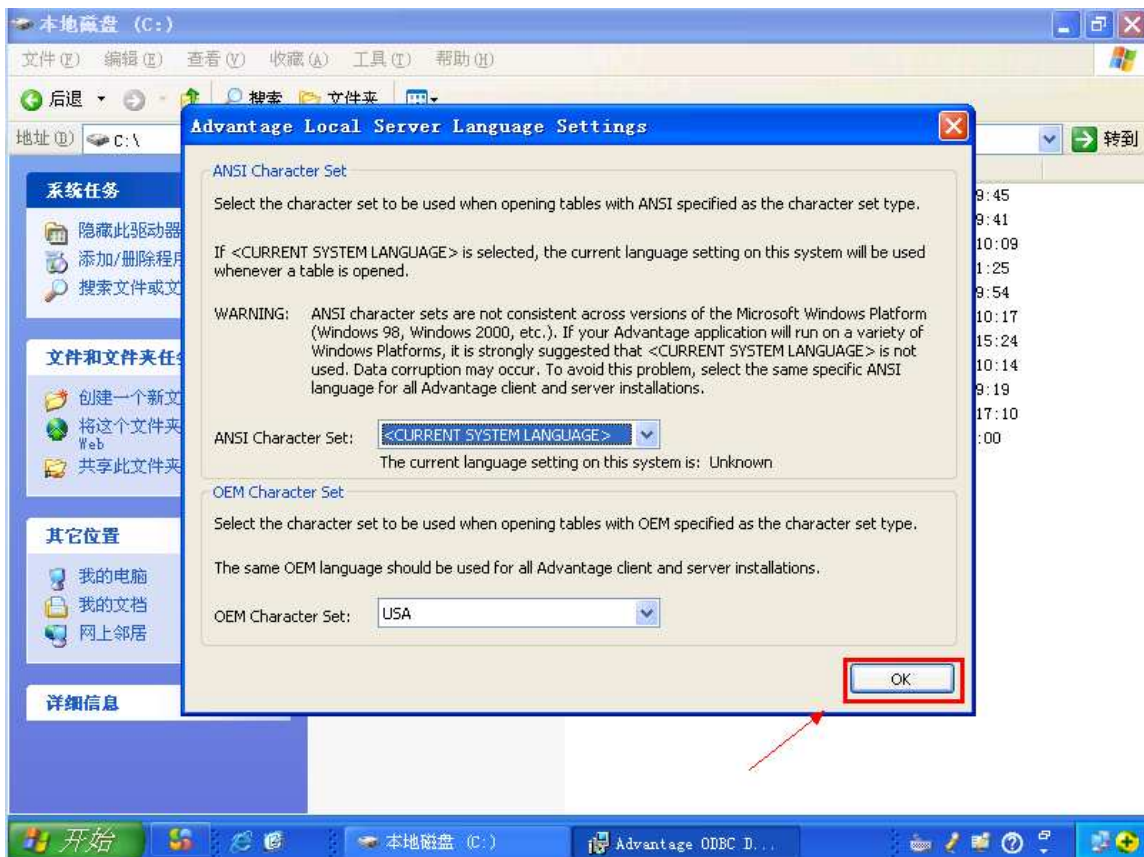
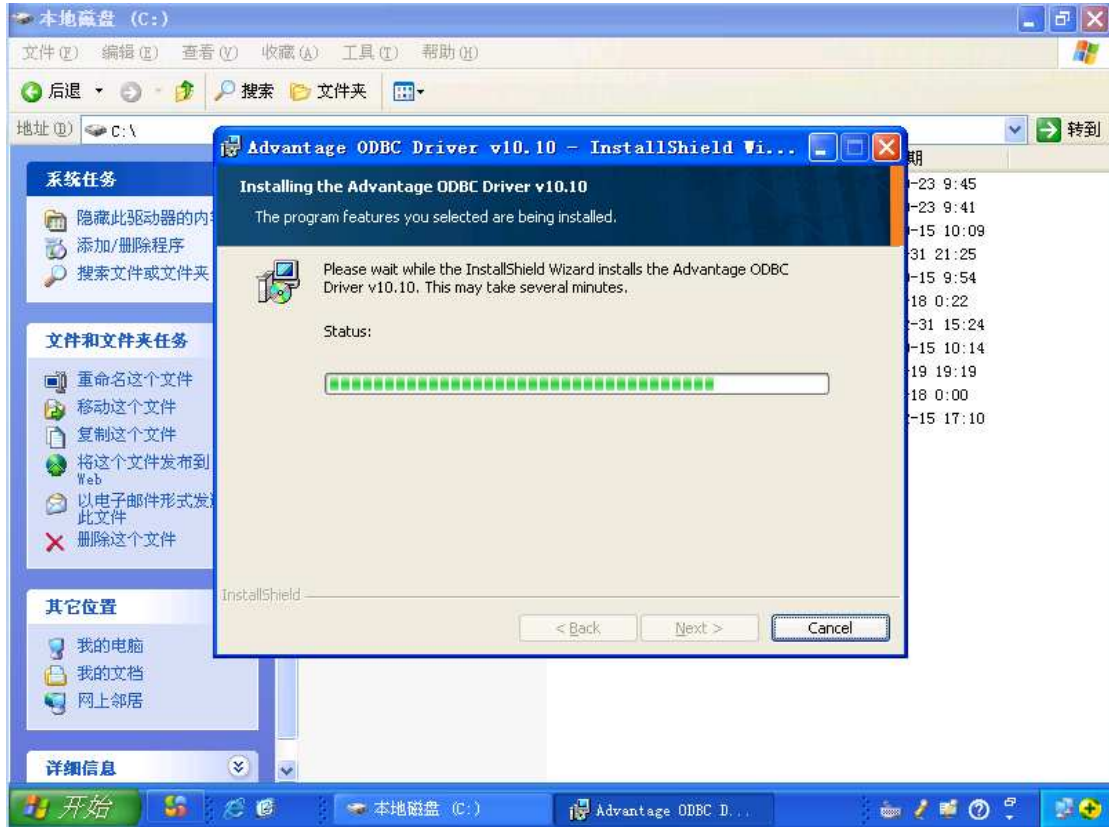


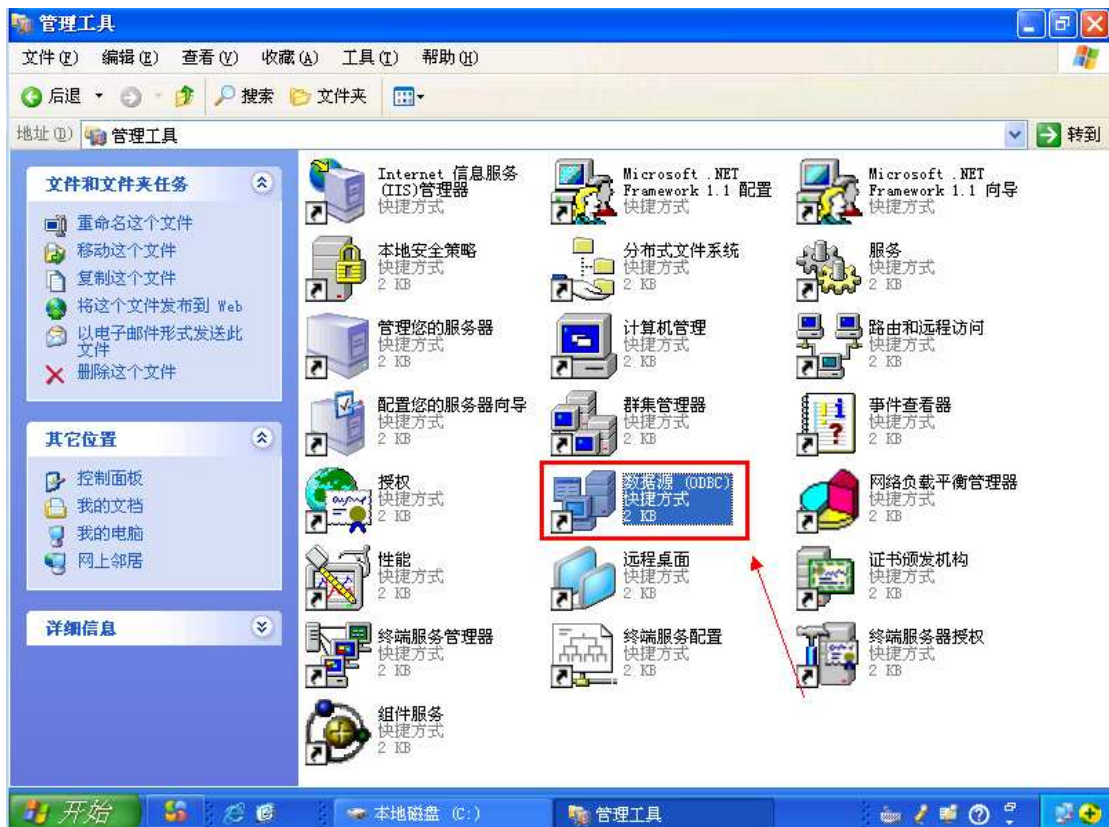
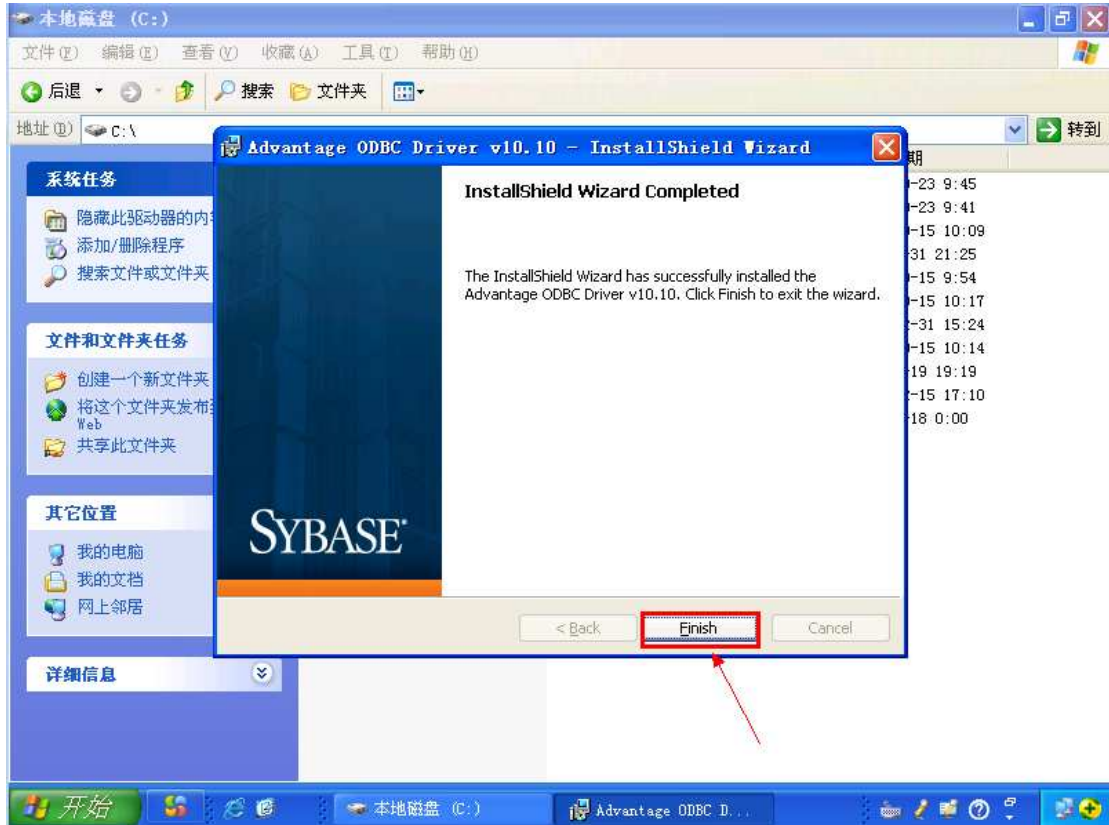
## 通过 SYBASE-ADS 的 ODBC 驱动分享 WGT 数据

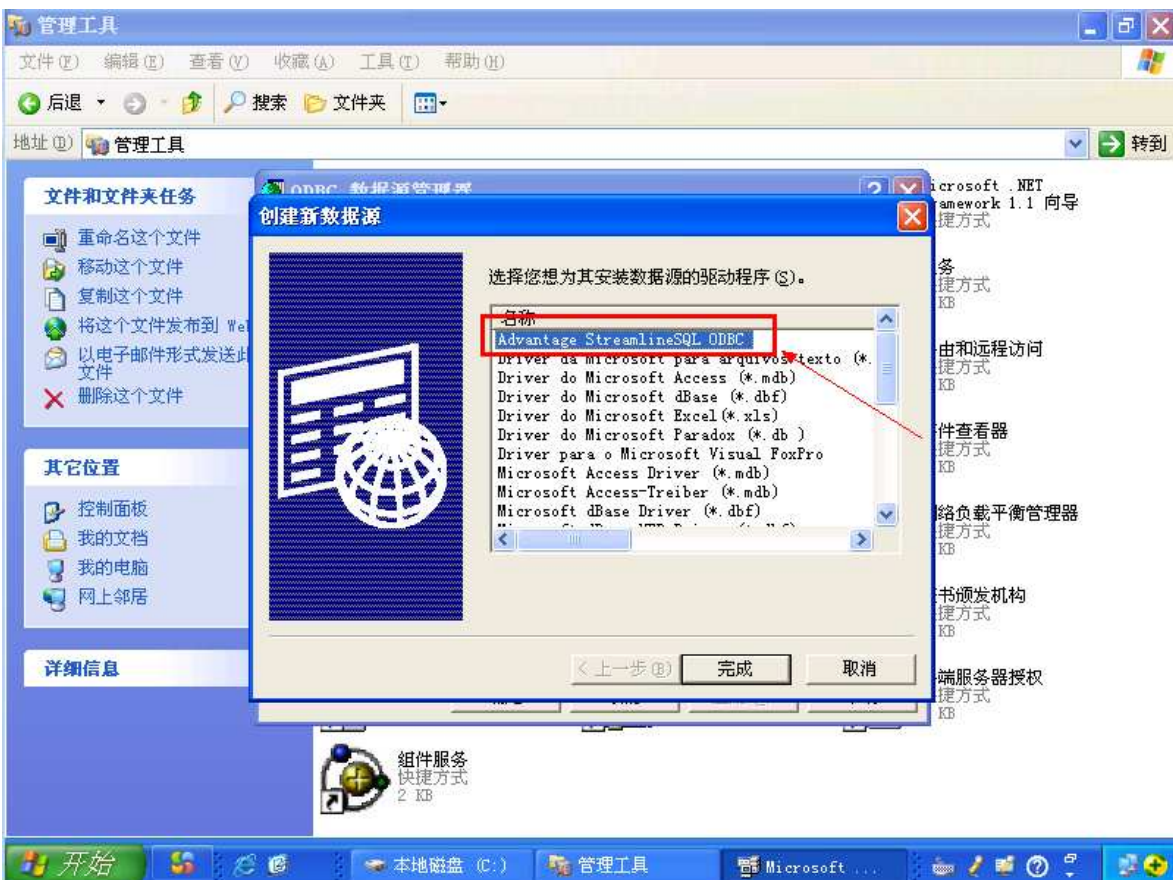
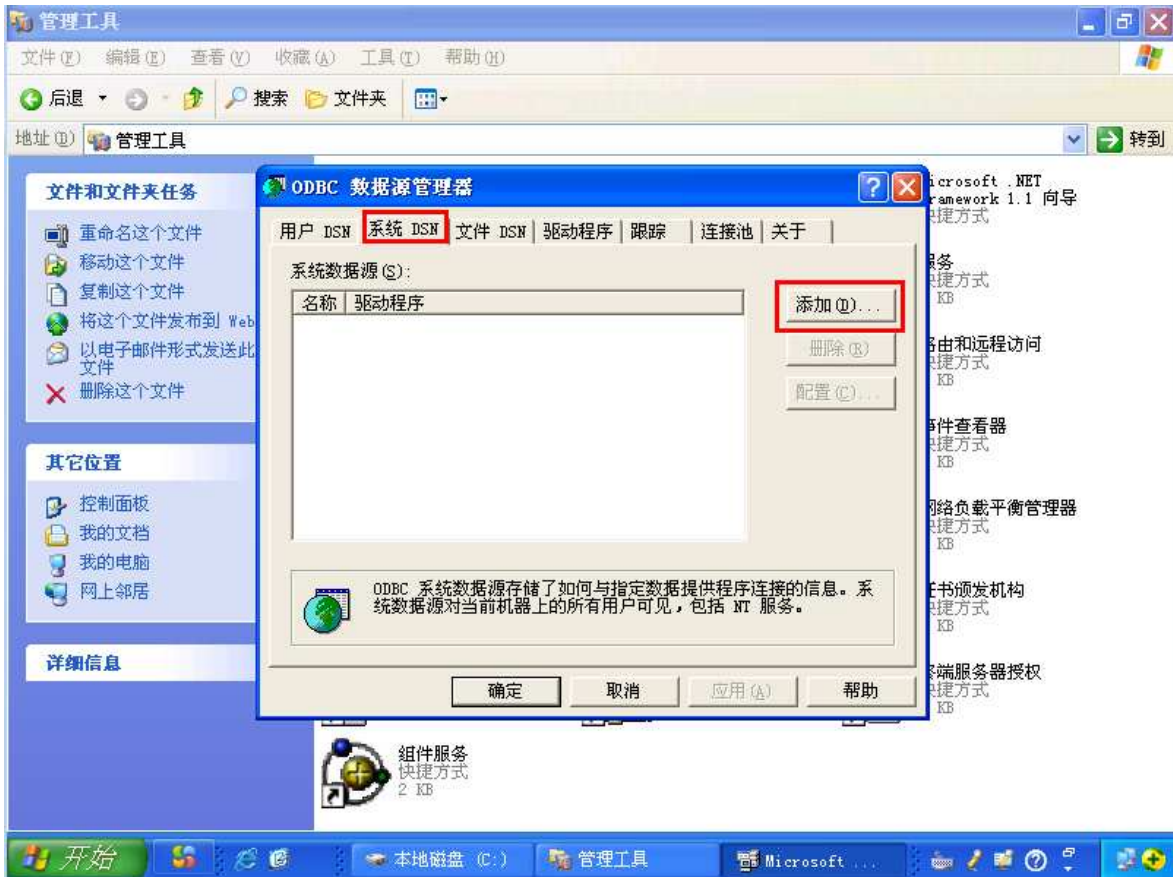


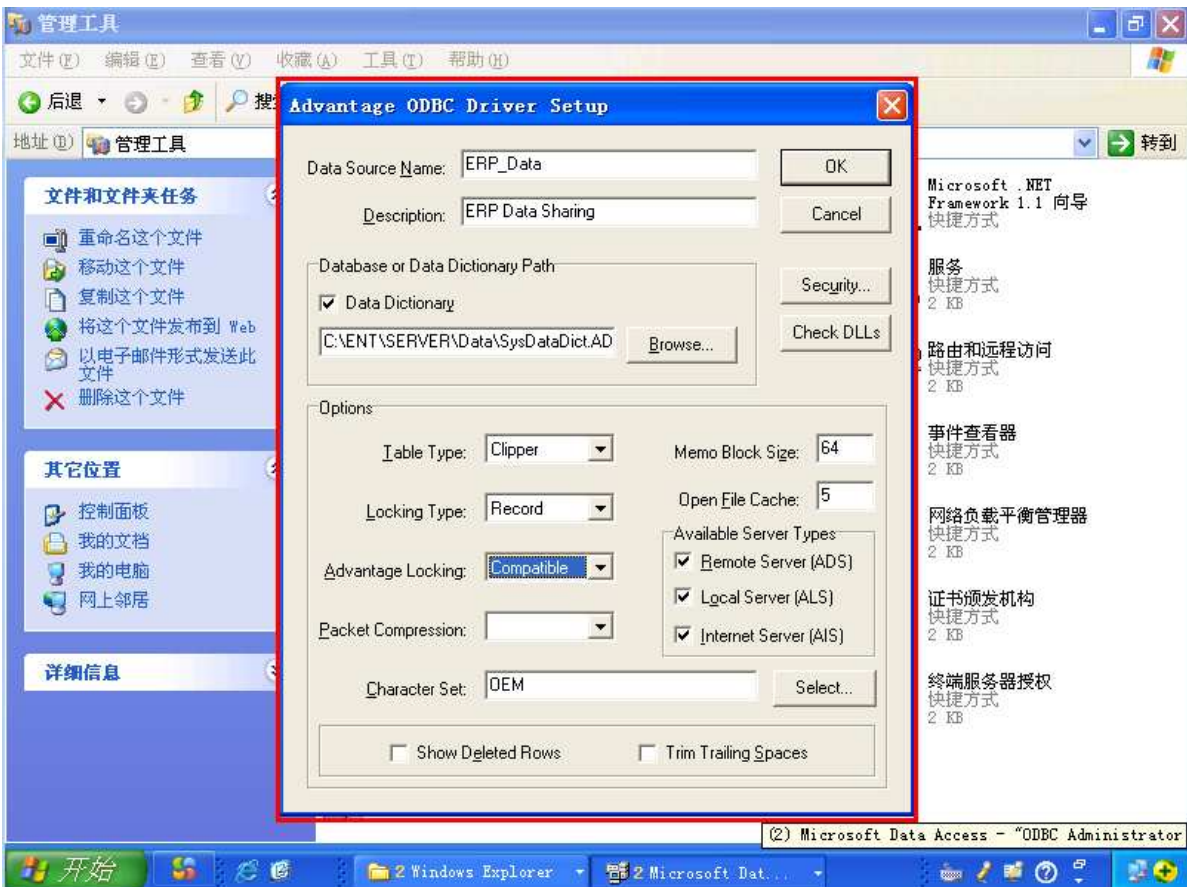
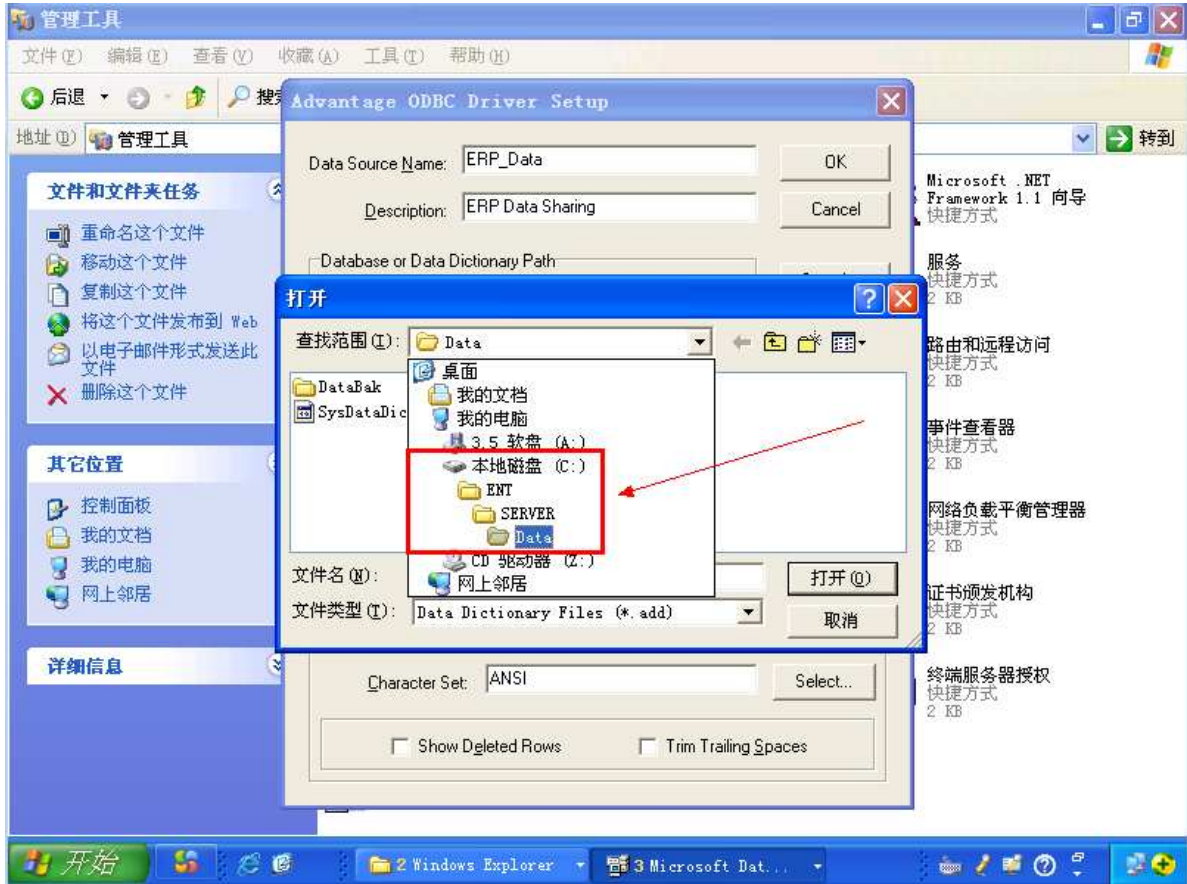


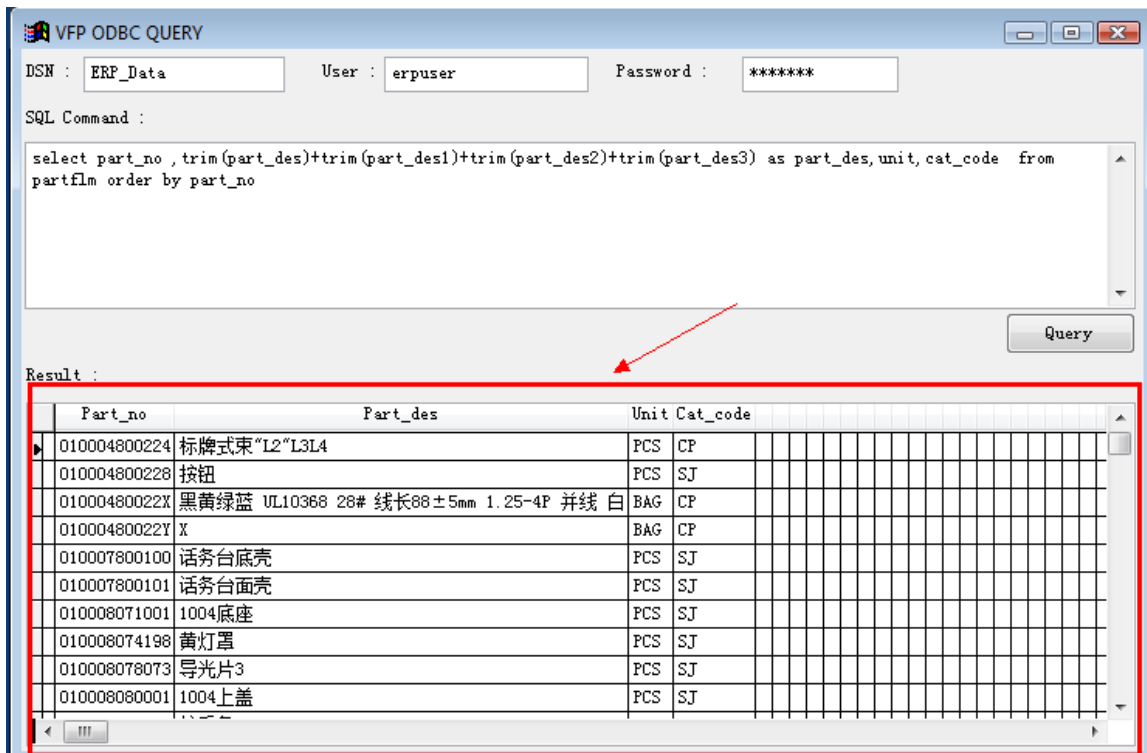
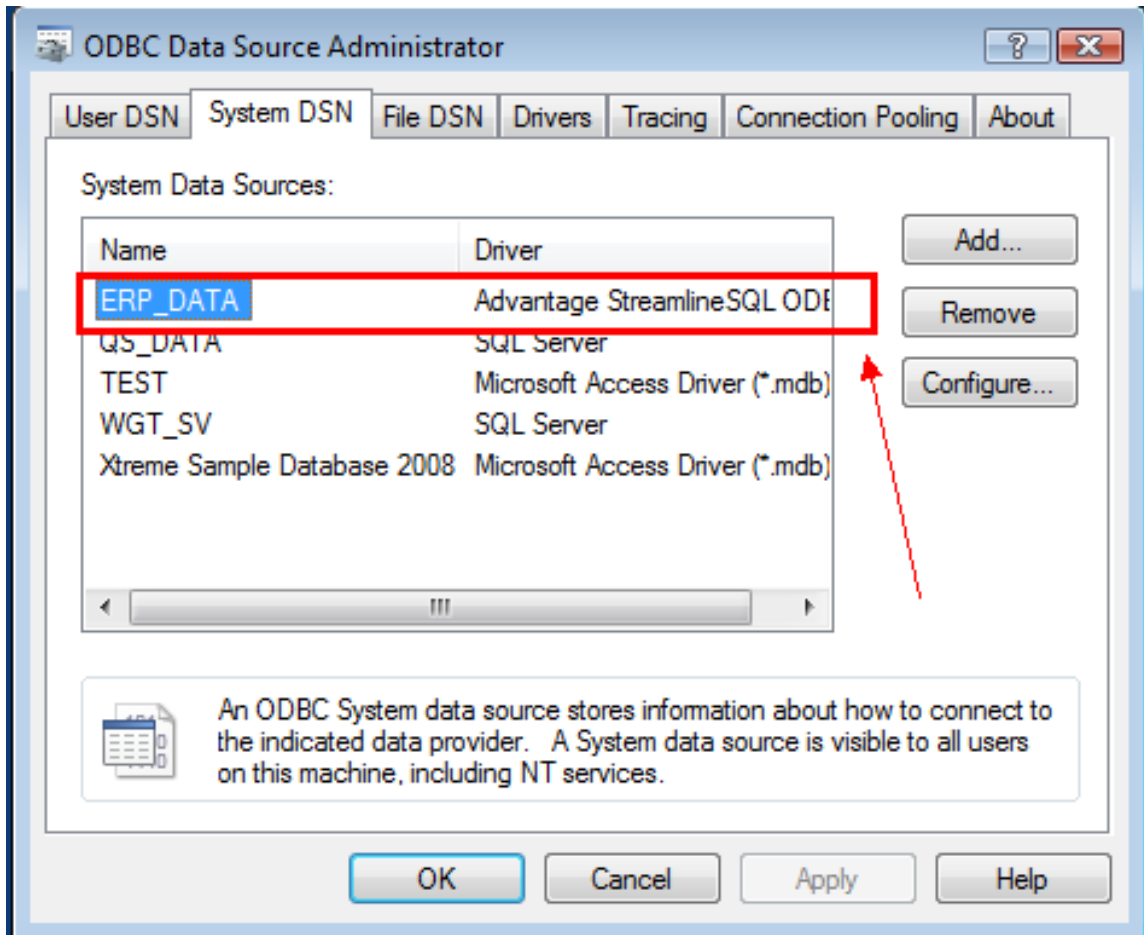














物品档案维护 (FRM0051) | 用户: ADMIN

物品编号:  ...

种类:  ... 库存单位:  ... 工程单位:  ...

物品编号	物品名称	单位	种类
010004800224	标牌式束 L2" L3 L4 L5	PCS	CP
010004800228	按钮	PCS	SJ
01000480022X	黑黄绿蓝 UL10368 28# 线长88±5mm 1.25-4P 并线 白	BAG	CP
01000480022Y	X	BAG	CP
010007800100	话务台底壳	PCS	SJ
010007800101	话务台面壳	PCS	SJ
010008071001	1004底座	PCS	SJ
010008074198	黄灯罩	PCS	SJ
010008078073	导光片3	PCS	SJ
010008080001	1004上盖	PCS	SJ
010008333121	拉手条	PCS	SJ
010008610792	挡条	PCS	SJ
010008641001	1004镜片	PCS	SJ
010008643001	1004导光柱	PCS	SJ
010021040372	走线槽组件 物品1 物品2 物品3	PCS	CP
010021101191	保护盖	PCS	CP
010021101200	保护盖 这是一个测试	PCS	CP
010021101222	防滑脚垫	PCS	CP
010021132080	假拉手条	PCS	CP
010021140460	LPA side cover	PCS	CP